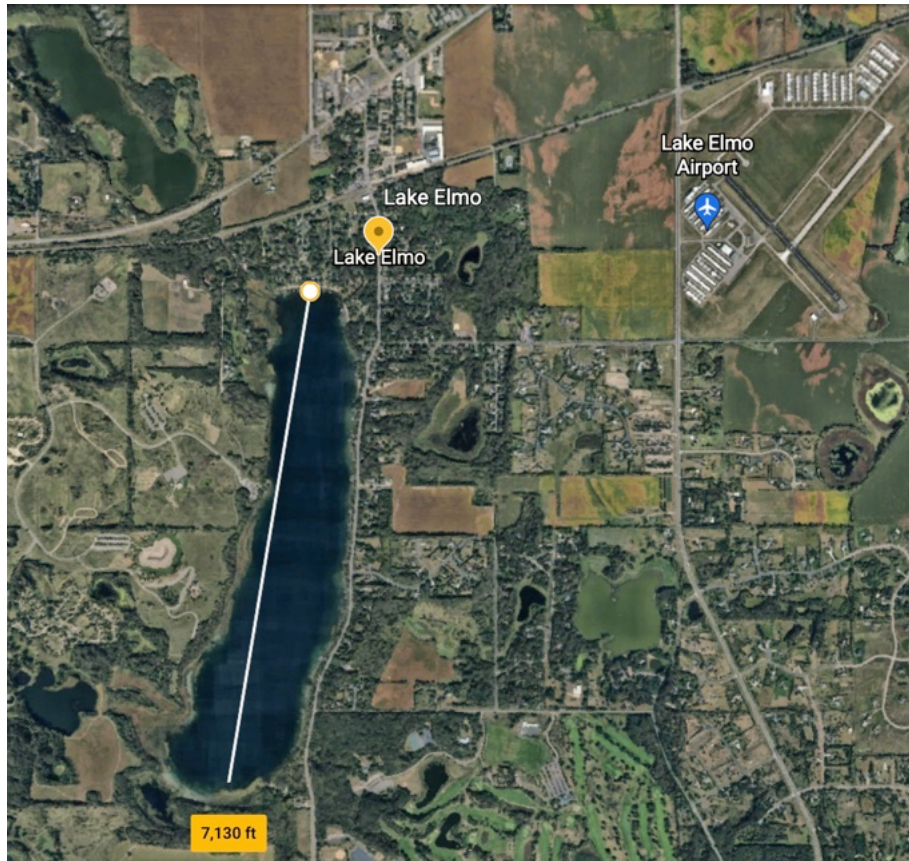


How short of a lake?



How do you tell from the air?

1. Fly downwind at 90kt groundspeed
2. That's equal to 1.5miles/minute
3. We need a mile to take off over 50ft tree.

Calculation: Seconds = $1.0\text{mile}/(1.5\text{mile}/\text{Min}) * 60 \text{ seconds}/\text{Min} = 40 \text{ seconds}$ flying downwind.